

2014 — 2015
HEAD/FACE PROTECTION



 **ELVEX**®



Table of Contents

- Tectra™ Safety Caps 3
- QuickSnap™ System Overview 4-5
- ELVEX® Cap Mount Ear Muffs 6
- QuickSnap™ Components 7
- Face Shields 8-9
- UltiMate™ Headgear and Mesh Screens 10
- ARC Kits 11
- BrushGuard™ and CoolGuard™ 12
- Accessories 12

Virtually every face shield, for every job, for every brand hard hat.

Only ELVEX® can offer you so many choices for safe, cost-effective head and face protection. And using our **QuickSnap™** system you can place nearly 30 face shields and visors on any major brand of safety cap, then add one of our 16 cap-mounted ear muffs and COM systems alone or in combination with our shields. It's a versatile, all-in-one face/head/hearing protection system. Just one reason why people say, "I prefer ELVEX™".



QuickSnap™ Safety Cap System

Tectra™ Safety Caps — Smart Design Patent #D648,889

A merger of modern and traditional design — plus extra functionality, with special contours on sides accommodate ear muffs — in six popular colors

Includes 29mm slot that accepts all accessories

Tectra™ caps easily integrate all hearing and face protection including competitor accessories.

Lightweight polypropylene shell Easy all-day comfort

Swiveling nape strap For more secure fit under nape of head

Four suspension options

Hidden head-hugging suspensions — 4 or 6 Point ratchet and pin-lock styles — fit great and keeps protection in place

Vented and non-vented models available

Vented model has eight ventilation holes at the crown for improved air flow and wearer comfort

ANSI Z89.1-2009 Compliant for Type I Helmets

The non-vented caps comply with Class E, G, and C, and the vented version complies with Class C

Class C — Conductive — not intended for electrical hazards

Class G — General — low voltage, proof tested to 2,200 volts

Class E — Electrical — higher voltage, proof tested to 20,000 volts

Lightweight, rugged polypropylene shell



Eight ventilation holes improve air flow

Rain channels so water doesn't run down the back of your neck

Contoured sides accommodate ear muffs

29mm slots accept major brand of accessories



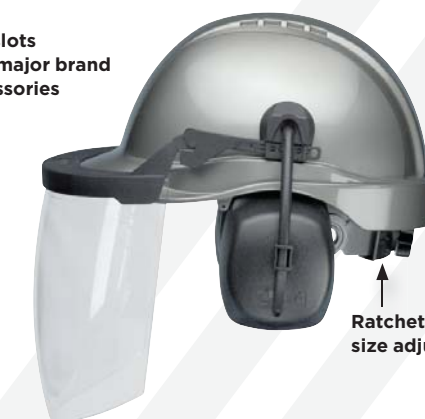
4 or 6-point Pin-lock suspension



4 or 6-point Ratchet suspension



Chin Strap SCNS-30



Ratchet or Pin-lock size adjustment options

Product No.	Description / Non-Vented Models
SC-50-4P w/ color*	Tectra™ Safety Cap, Non-vented, w/ Four Point Pinlock Fabric Suspension. Class E, G and C
SC-50-6P w/ color*	Tectra™ Safety Cap, Non-vented, w/ Six Point Pinlock Fabric Suspension. Class E, G and C
SC-50-4R w/ color*	Tectra™ Safety Cap, Non-vented, w/Four Point Ratchet Fabric Suspension. Class E, G and C
SC-50-6R w/ color*	Tectra™ Safety Cap, Non-vented, w/Six Point Ratchet Fabric Suspension. Class E, G and C

Product No.	Description / Vented Models
SC-50V-4P w/ color**	Tectra™ Safety Cap, Vented, w/Four Point Pinlock Fabric Suspension. Class C
SC-50V-6P w/ color**	Tectra™ Safety Cap, Vented, w/Six Point Pinlock Fabric Suspension. Class C
SC-50V-4R w/ color**	Tectra™ Safety Cap, Vented, w/Four Point Ratchet Fabric Suspension. Class C
SC-50V-6R w/ color**	Tectra™ Safety Cap, Vented, w/Six Point Ratchet Fabric Suspension. Class C

Product No.	Description / Accessories & Replacement Suspensions
SCNS-30	Tectra™ Safety Cap Chin Strap
SCS-50-4P	Tectra™ Replacement Four Point Pinlock Fabric Suspension
SCS-50-6P	Tectra™ Replacement Six Point Pinlock Fabric Suspension
SCS-50-4R	Tectra™ Replacement Four Point Ratchet Fabric Suspension
SCS-50-6R	Tectra™ Replacement Six Point Ratchet Fabric Suspension



*Non-Vented: Orange, White, Red, Yellow, Blue, Graphite Silver.
**Vented: Orange, White

Add face and hearing protection with ELVEX QuickSnap™ System in

to any hard hat just four easy steps!

Only ELVEX® allows you to add face and hearing protection to virtually every worker's hard hat, whatever their preferred brand of safety cap. Using **QuickSnap™** Slot Adaptors, Bracket Arms and Visor Brackets you can add complete above-the-shoulder protection without investing in new hard hats. **There are just 4 easy steps...**

Ordering is a snap:

Step 1. Locate your hard hat brand in the Product Selection Chart below, or choose the award-winning ELVEX® Tectra™.

Step 2. Decide if you would like to add
 (a) face shield protection only
 (b) hearing protection only or both face and hearing protection

2a. For Face protection only — select slot adaptor blade based on hard hat choice from the chart below. Continue to Step 3 and 4.

2b. For Hearing protection- choose an ELVEX® Cap Mount Ear Muffs style on page 6 — with 25, 27 or 28 NRR. Muffs attach to safety cap choice using Bracket Arms with **QuickSnap™** Slot Adaptor Blades from the chart on page 7. To add a face shield continue to Steps 3 and 4.

Step 3. In the Visor Bracket column, select the correct ELVEX® Visor Bracket for your hard hat.

Step 4. Choose an ELVEX® Face Shield or Visor from pages 7-9. Options include clear, clear anti-fog, tinted, hi-temp, gold-coated, electric ARC, molded Lexan®, weld shade, or die-cut polycarbonate, aspherical molded polycarbonate, or heavy-duty steel mesh. All face shields attach to ELVEX® Visor Brackets with Slot Adaptors and allows them to flip up and stay up until needed.



ELVEX® Tectra™ Safety Cap with SA/29, VB-30, FS-18L



ELVEX® Tectra™ Safety Cap w/HM-2029



ELVEX® Tectra™ Safety Cap with HM-2029, VB-30, FS-16

Product Selection Chart for Step 2a and 3 - Face Protection only

1. HARD HAT BRAND	2a. SLOT ADAPTOR BLADES		3. VISOR BRACKETS	
	SA-29	SA-93	VB-10	VB-30
Product Number				
ELVEX® Tectra™ SC50	X	X		X
Bullard	X	X	X	
ERB		X	X	
Fibre Metal requires QS-29*	X	X	X	X
Jackson	X	X	X	
MSA V-Guard HDPE	X	X	X	
MSA V-Guard Advance	X	X		X
North A29	X	X		X
North A59/A69/A79	X	X	X	
Willson Alpha/Beta		X	X	
3M	X	X	X	

* QS-29 Quick Slot creates a slot on slotless caps
 NOTE: Shaded X selections are the best fit. Others will also fit.

1. Hard Hat

Select your current hard hat from adjacent chart (or choose our award-winning Tectra™)



2a. QuickSnap™ Slot Adaptors

Allows you to combine head with face protection



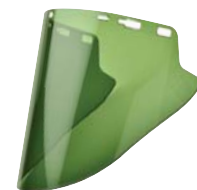
3. Visor Bracket

ELVEX® visor brackets accommodate most brim styles



4. Face Shield

Choose from almost 30 face shields/visors/screens — at 0.078"



2b. QuickSnap™ Cap Mount Ear Muffs/Slot Adaptor

Choose from 6 passive cap-mounted ear muffs or 10 electronic communication ear muffs alone or with face protection



ELVEX Cap Mount Ear Muffs

Add to most any brand safety cap for the ultimate in hearing protection, user-flexibility and comfort.

Add ELVEX® ear muffs to most any brand safety cap

ELVEX® QuickSnap™ system of Cap Muffs with bracket arms adapts every worker's hard hat to fit ELVEX® ear muffs

Unique "Fit Under" cap design

Allows ELVEX® HM-20, HM-60, HM-80 muffs to fit under safety caps

Accommodate full range of work environments

Muffs available with 25, 27 and 28 dB NRR (Noise Reduction Ratings)

Two integrated rest positions

Flip them out for a short break, or flip them up when the job is done

Lightweight dielectric construction, non-conductive

Comfortable for all-day wear; lighter than most other muffs

Un-slotted caps and bump caps accommodated

Muffs fit perfectly using ELVEX® QuickSlot™ adaptor (QS-29)

Face shields and visors can be easily added without tools

All ELVEX® cap mount muffs accept ELVEX® Visor Brackets and shields



"Fit Under" Design Muff

Product No.	NRR	Description
HM-20**	25	Cap-Mounted Low Profile Ear Muff, 8.1 oz./230g.
HM-60**	27	Cap-Mounted Large Volume Ear Muff, 8.5 oz./242g.
HM-80**	28	Cap-Mounted SuperSonic Ear Muff, 9.4 oz./268g.

** See chart below to select cap muff slot adaptor

*Notes:

ELVEX® cap muff bracket arms have blades in 3 sizes to fit major brands of hard hats. The last 2 digits of the model#, i.e. HM-20** describes the blade size. See chart below.

Cap mounted muff systems accepts VB-10/30 visor brackets for mounting ELVEX® face shields.

Competitor Safety Cap



HM-2029



HM-6093



HM-8093

Product Selection Chart for Step 2b and 3 Hearing Protection and Visor Bracket

HARD HAT BRAND	MUFF SLOT ADAPTOR BLADE		VISOR BRACKETS	
	HM-29	HM-93	VB-10	VB-30
ELVEX® Tectra™ SC50	X	X		X
Bullard	X	X	X	
ERB		X	X	
Fibre Metal requires QS-29*	X	X	X	X
Jackson	X	X	X	
MSA V-Guard HDPE	X	X	X	
MSA V-Guard Advance	X	X		X
North A29	X	X		X
North A59/A69/A79	X	X	X	
Willson Alpha/Beta		X	X	
3M	X	X	X	

* QS-29 Quick Slot creates a slot on slotless caps.
NOTE: Shaded X selections are the best fit. Others will also fit.



Flip muffs & visor up when not in use

QuickSnap™ System Components

The ELVEX® QuickSnap™ System includes slot adaptor blades, bracket arms and visor brackets that allow major hard hat brands to accept ELVEX® cap mount ear muffs, face shields and visors. The slot adaptor blades are an integrated part of the muff arm assembly and there are no separate parts to purchase.

Slot Adaptor Blades

Product No.	Description
SA-29	Slot Adaptor for Slotted Safety Caps*. For use with VB-10/30 Visor Bracket
SA-93	Universal Slot Adaptor Fits 29mm and most 33mm Wide Slotted Safety Caps*. Remove slot filler for use with narrower slots. Use with VB-10/30 Visor Bracket.
QS-29	Quick-Slot for Mounting face shields and Muffs to Unslotted Safety Caps



SA-29

SA-93

QS-29

Visor Brackets

ELVEX® Visor Brackets (VB-10 and VB-30) are designed to permit mounting of our full face shield line to most major brands of safety caps and allows simultaneous use of cap mount ear muffs for hearing protection. Each model is designed to accommodate safety helmets with different beak lengths and angles. Our new VB-60 Visor Bracket is designed for non-conductive applications and has an overhead center position feature that balances and distributes the weight of the shield evenly. Attaches to most safety caps and slot-less safety caps.

Product No.	Description
VB-10	Visor Bracket Mounts on Safety Caps, use with ELVEX® Slot Adaptors or ELVEX® Cap Mount Ear Muffs. Accepts Face shield or Visors. Now with wide brim.
VB-30	Visor Bracket for Safety Caps with Sloping Brim, use either an ELVEX® slot adaptor or ELVEX® Cap Mount Ear Muffs. Accepts Face Shields or Visors. (not shown)
VB-50	Aluminum Visor Bracket that directly attaches to most Safety Caps for High Temperature Applications. (Not for use with cap muffs)
VB-60	Dielectric Visor Bracket that directly attaches to most Safety Caps for Non-Conductive Applications (Not for use with cap muffs) Ideal for slot-less safety caps.



VB-10

VB-30

VB-60

VB-50

See Selection Chart on pages 5 and 6 to match visor bracket with safety cap brand.

Replacement Bracket Arms

Product No.	Description
BR-29	Replacement Arm Bracket for Cap Mount Muffs, HM-20/60/80
BR-93	Replacement Arm Bracket for Cap Mount Muffs, HM-20//60/80
QS-29	Quick-Slot for Mounting Muffs to Unslotted Safety Caps



BR-29

BR-93

QS-29

Replacement Bracket Arms with Slot Adaptors

ELVEX Face Shields: World Class Quality and Durability

Elvex® offers a variety of face shield shapes and sizes, specialty coatings and absorbers to suit your specific work environment. Featuring a universal hole pattern, shields are designed to fit all ELVEX® headgear and visor brackets as well as most competitive headgear.

All face shields are ANSI Z87.1 Compliant

Lexan® (trademark of SABIC IP), is a superior quality, optical grade, highly impact resistant and heat tolerant material (up to 265°F), with limited scratch resistance. Lexan® offers UV absorption characteristics 99% between 180-380 nm.

Polycarbonate (PC) is a non-proprietary high quality material with similar performance characteristics to Lexan®.

Hard Coatings (HC) are used to provide improved chemical and abrasive resistance. Hard coatings increase the useful work life of a face shield in some environments.

Anti-fog Coating is available on select face shields, and may be required for some environments.

Universal Hole Pattern molded, die-cut universal hole pattern fits most competitors headgear options.

Economy Face Shield

Our most economical flat option with a 0.04" thick shield is perfect for use with a broad spectrum of industry headgear. Acetate face shields are the best choice for chemical splash applications.

Product No.	Description
FS-15ACE	Clear Shield, 8" x 15.5" x .04", Flat Acetate
FS-15P	Clear Shield, 8" x 15.5" x .04", Flat PC

Headgear sold separately pg. 10

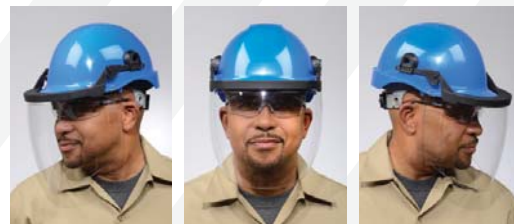
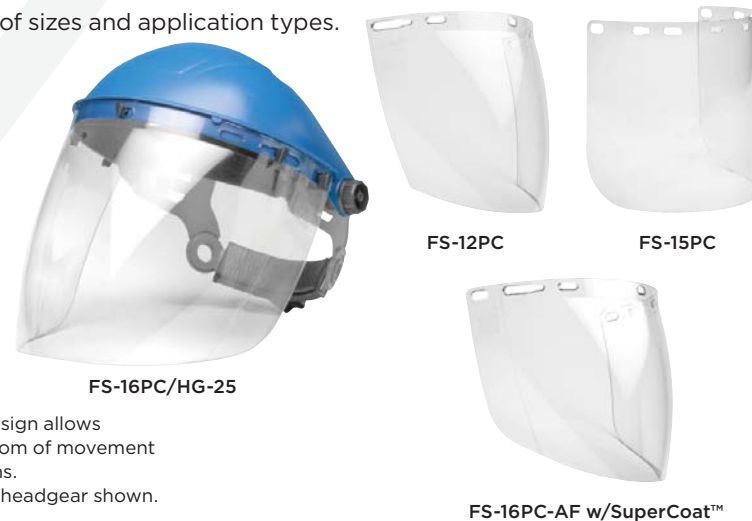


Molded Polycarbonate Face Shields

High Performance polycarbonate face shields in a variety of sizes and application types.

Product No.	Description
FS-12PC	Clear Shield, 8" x 12" x .078", Molded Aspherical PC
FS-15PC	Clear Shield, 8" x 15.5" x .078", Molded Cylinder PC
FS-16PC	Clear Shield, 8" x 16" x .078", Molded Aspherical PC
FS-16PC-AF	Clear Shield, 8" x 16" x .078", Molded Aspherical Anti-Fog/PC

Headgear sold separately pg. 10



Aspherical design allows optimal freedom of movement in all directions.
FS-16PC with headgear shown.

Premium Molded Lexan® Face Shields

Our premium Lexan® face shields offer optimal performance in a variety of sizes and application types.

Product No.	Description
FS-12L	Clear Shield, 8" x 12" x .078", Molded Aspherical Lexan® PC
FS-12LG	Green Shield, 8" x 12" x .078", Molded Aspherical Lexan® PC
FS-15CL	Clear Shield, 8" x 15.5" x .078", Molded Cylinder Lexan® PC, Super HC
FS-15L	Clear Shield, 8" x 15.5" x .078", Molded Cylinder Lexan® PC
FS-15LG	Green Shield, 8" x 15.5" x .078", Molded Cylinder Lexan® PC
FS-18CL	Clear Shield, 10" x 18.5" x .078", Molded Cylinder Lexan® PC, Super HC
FS-18L	Clear Shield, 10" x 18.5" x .078", Molded Cylinder Lexan® PC
FS-18L-CP	Clear Shield w/Chin Protector, 10" x 18.5" x .078", Molded Cylinder Lexan® PC
FS-18LG	Green Shield, 10" x 18.5" x .078", Molded Cylinder Lexan® PC

Headgear/visor bracket sold separately pg. 10 and 7.



Lexan® is a Trademark of SABIC Innovative Plastics IP BV

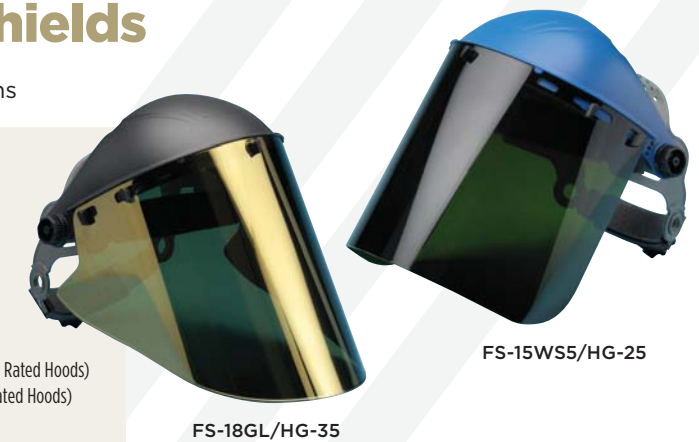


Molded Specialty Face Shields

For welding/electric arc and high temperature applications

Product No.	Description
FS-15WS5	Green Welding Shade 5, 8" x 15.5" x .078", Molded Cylinder HC/PC
FS-18ARC10	ARC-Shield, 10" x 18.5" x .078", Molded Cylinder Lexan® AF/PC NFPA 70E Risk Category 1 (12 cal/cm2)
FS-18GL	Gold Coated Shield, 10" x 18.5" x .078", Molded Cylinder Lexan® HC/PC, (Heat resistance approx. 1800°F)
FS-20ARC10	ARC-Shield w/Chin Protector, 10" x 18.5" x .078", Molded Cylinder Lexan® AF/PC, NFPA 70E Risk Category 2 (12 cal/cm2)
FS-ARC40-18-V	ARC Shield, Single Layer AF/PC, w/Sewn on Hook Velcro, 56 cal/cm2 (Use w/ARC Rated Hoods)
FS-ARC40-V	Dual Layer AF/PC ARC Shield w/Sewn on Hook Velcro, 80 cal/cm2 (Use w/ARC Rated Hoods)

Headgear sold separately pg. 10



UltiMate™ Headgear System

When you need quality head gear to hold face shields, visors and mesh screens, ELVEX® has the solution. **UltiMate™** HG-25 and HG-35 are the perfect platform for metal and process industries, power generation, manufacturing, forestry and other industrial uses.

Tight, hugging suspension

Fits comfortably for all-day wear with two swivel points on rear neck band to provide a secure, hugging fit

Fully compatible design fits most face shields

Universal pattern swivel locks accommodate hole patterns on most brands of face shields

Comfortable wear all day

Soft fabric brow and neck pad

Fits more heads

Ratchet adjusts for head circumference and suspension has pin-lock adjustment for head height

ANSI Z87.1 Compliant

Headgear Product No.	Description
HG-25 UltiMate™	Ratchet Headgear w/Fabric Sweatband, 5 Swivel Locks, Blue
HG-35 UltiMate™	Ratchet Headgear w/Oversized Heat Tolerant Brow Guard, Fabric Sweatband, 5 Swivel Locks, Black

Headgear/Face Shield Systems	Description
HG-70	Headgear w/Steel Mesh Screen
HG-80	Headgear w/PC Shield



HG-25



HG-35
Oversized Heat Tolerant Browguard



HG-80



HG-70

Mesh Screens

Elvex® mesh screens provide great protection from flying particles and debris with maximum ventilation.

The Nylon mesh screen is great for outdoor applications

For hot, humid environments where ventilation is a requirement. Lightweight and durable. This convenience shield does not meet ANSI requirements.

Steel mesh screens

Offers impact resistance and is intended to deflect flying objects. Meets ANSI Z87.1 standard.

High Temperature Steel mesh screen

Ideal for use in elevated temperatures. Meets ANSI Z87.1 standard.

Note: ANSI Z87.1 standard requires separate eye protection, suitable for the situation and application.

Mesh Screens Product No.	Description
NV-70	Nylon Mesh Forestry Screen For VB-10/30, 7.25" x 13", EN1731
SV-15H	Heat Reflecting Mesh Steel Screen For VB-10/30/50 & HG-25/35, 8" x 15.5", ANSI Z87.1
SV-70	Steel Mesh Forestry Screen For VB-10/30, 7.25" x 13", ANSI Z87.1, EN1731
SV-75	Steel Mesh Forestry Screen For HG-25/35, VB-50, 7.25" x 13", ANSI Z87.1, EN1731



SV-70



SV-15H



NV-70



SV-75

Face Shields for ARC FLASH Application

ELVEX® offers a range of specialty face shields for Arc Flash Hazards in extreme thermal energy conditions. Key benefits of ELVEX® ARC Shields and ARC Shield Kits:

- Proprietary molded polycarbonate design with special spectral absorbers
- Industry-leading 0.078" thickness for optimal thermal and impact protection
- Arc shields are ANSI Z87.1 Compliant
- Anti-Fog coating for long term anti-fog performance
- Light green shield tint provides excellent visible light transmission (VLT)
- All components tested and certified at Kinectrics High Current Laboratory

ELVEX® ARC Shield kits include hard hats, visor brackets and Balaclavas suitable for Hazard/Risk Categories (HRC) 1 and 2. The minimum Arc Rating, or ATPV (Arc Thermal Performance Value) is shown in the table below.

NFPA 70E-2012 Hazard/Risk Categories with Head and Face Protection for category 1 and 2

Hazard/Risk Category	Arc Rated Head & Face Protection Required	Minimum ATPV in cal/cm2	ELVEX® Kit Item No.
1	ARC Shield, hard hat, balaclava, safety glasses, hearing protection	4	CU-ARC-1 or 2
2	ARC Shield with Chin Protection, hard hat, balaclava, safety glasses, hearing protection	8	CU-ARC-3, 4 or 5



HD-ARC-FR3

Included in all CU-ARC Kits



SG-14C

Complete ARC Kits Available

Kit No. (Cal Rating)	Safety Helmet	Arc Shield	Balaclava	Visor Bracket/Slot Adaptor	Eye Protection	Hearing Protection
CU-ARC-1 (12 cal)	Tectra cap, SC-50-6R	FS-18ARC10	HD-ARC-FR3	VB-30/SA-29	SG-14C	Quattro Ear Plugs*
CU-ARC-2 (12 cal)	Tectra cap, SC-50-6R	FS-18ARC10	HD-ARC-FR3	VB-30/SA-29	SG-14C	Cap Mount Muffs HM-20
CU-ARC-3 (12 cal)	Tectra cap, SC-50-6R	FS-20ARC10 w/chin protector	HD-ARC-FR3	VB-30/SA-29	SG-14C	Quattro Ear Plugs*
CU-ARC-4 (12 cal)	Tectra cap, SC-50-6R	FS-20ARC10 w/chin protector	HD-ARC-FR3	VB-30/SA-29	SG-14C	Cap Mount Muffs HM-20
CU-ARC-5 (12 cal)	Tectra cap, SC-50-6R	FS-20ARC10 w/chin protector	HD-ARC-FR3	VB-60	SG-14C	Quattro Ear Plugs*

*To be worn under balaclava

Product No.	Description
CU-ARC-1	12 CAL FS-18ARC10, Helmet, Balaclava, Clear Safety Glass, Accessories, Quattro Ear Plugs, NRR 25
CU-ARC-2	12 CAL FS-18ARC10, Helmet, Balaclava, Clear Safety Glass, Accessories, HM-20 Cap Muffs, NRR 25
CU-ARC-3	12 CAL FS-20ARC10 w/Chin Protector, Helmet, Balaclava, Clear Safety Glass, Accessories, Quattro Ear Plugs, NRR 25
CU-ARC-4	12 CAL FS-20ARC10 w/Chin Protector, Helmet, Balaclava, Clear Safety Glass, Accessories, HM-20 Cap Muffs, NRR 25
CU-ARC-5	12 CAL FS-20ARC10 w/Chin Protector, Helmet, Balaclava, Center Position/Weight Balancing Visor Bracket, Clear Safety Glass, Quattro Ear Plugs, NRR 25
HD-ARC-FR3	34 CAL rated Arc Rated, Double Ply Balaclava



CU-ARC-3 includes Quattro™ Ear Plugs

CU-ARC-5 includes Quattro™ Ear Plugs



CU-ARC-4 includes HM-20 muffs



CU-ARC-2 includes HM-20 muffs



CU-ARC-1 includes Quattro™ Ear Plugs

BrushGuard™ & CoolGuard™

Designed specifically for Outdoor Power and Lawncare markets when head protection is not required. Great for hearing and face protection while using gas powered string trimmers, leaf blower, vacs and other power equipment.

Both products combine face protection with hearing protection for a lightweight integrated system designed to work together. Available in both nylon mesh (BrushGuard™) and in a polycarbonate shield (CoolGuard™) that meets ANSI Z87 impact resistance standards when protecting the face from flying particles is required.

Warning: OSHA requires workers to always wear ANSI Z87.1 safety eyewear in addition to the BrushGuard™ and CoolGuard™ or any safety shield.

Product No.	Description
FS-3000	Replacement Lexan® Shield for HB-3000, 8" x 16" x .04"
HB-3000	CoolGuard™ Equalizer™ SuperSeal Ear Muff w/Lexan® Face Shield, Black, NRR 27
HB-7000	BrushGuard™, Equalizer™ SuperSeal Ear Muff w/Nylon Mesh Visor, Black, NRR 27
NV-3000	Nylon Visor for HB-7000 or VK-3000
VK-3000	Visor Kit, Allows Attachment of Visors (FS-3000 or NV-3000) to HB-2000B and HB-5000B



HB-3000



HB-7000

Accessories

ELVEX® offers a line of face shield accessories to protect and extend the useful life of your face shield products.

Product No.	Description
SGB-100	Microfiber carrying bag for cap with shield



SGB-100



U.S.A. and International Sales

Email	Sales@elvex.com
U.S. Toll Free	1.800.888.6582
Phone	1.203.743.2488
U.S. Toll Free Fax	1.800.666.1226
Fax	1.203.791.2278